

LAURA ASHLEY
HOME

distressed
leather
furniture

information and care guide

please read and retain for future reference

Afin d'obtenir ce guide en français, merci de vous rendre à cette adresse: http://www.lauraashley.com/page/care_guides

Hier finden Sie den Ratgeber in deutscher Sprache: http://www.lauraashley.com/page/care_guides

DISTRESSED LEATHER UPHOLSTERED FURNITURE

Genuine leather is a natural and beautiful material with truly individual characteristics.

The distinctively designed pieces in distressed leather give the much sought after effect of a well loved family heirloom.

- Upholstered in high-grade, full-grain leather specially treated to give an aged look.
- Any natural marks and scars present are left fully exposed, and there may be significant variances in texture and shading individual to each piece which are testament to the genuine origin of the product; form part of the design and do not affect durability.
- After upholstery leather is further treated with six stages of hand staining and waxing to emphasise the aged look of an antique chair which ensures that no two pieces are exactly alike.
- Frames combine traditional glued, screwed and dowelled joints with hardwood and modern materials.
- Legs are polished hardwood, deliberately, distressed and stained to compliment the appearance of the leather.
- To be sure you are completely satisfied with your purchase, please take time to familiarise yourself with the details below.

UNDERSTANDING LEATHER

Natural characteristics and features of all good quality leathers include:

Scars

Recognised as dark lines in the leather, which vary in size, shape and texture and do not affect the durability or performance.

Neck, Growth Marks and Body Moulding

Caused by stretching in the hide during its lifetime these features may look like creases in the leather, and do not affect performance. After a time all leathers relax and mould from use, this is quite normal and will not reduce comfort.

Shade variation

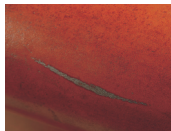
Four hides are needed to make one large sofa, and every hide has a slightly different grain pattern; so variation in colour and texture may occur between the different parts of a piece and from product to product.

Pull Up

Leather must be stretched taut for perfect upholstery; this causes it to appear lighter in colour especially across tighter areas such as arms which will be more obvious on wax and oiled finishes.

Scratches

On some wax finished leathers, characteristic scratch type marks may occur during the tanning and tumbling processes, these will be under the wax. Any scratches in use may be reduced by massaging the leather to redistribute natural oils.



RECLINING FURNITURE

Recliners require a firm body motion to operate, the mechanism does not lock when fully reclined and will return to the semi reclined position if weight is lifted. There are many moving parts and it is normal for minor squeaks and creaks to emit from the recliner whilst in use. Take care when using the kickboard as damage or premature wear to the material through heels or footwear will not be our responsibility.

SEAT CUSHIONS, FILLINGS & SEAT COVERS

Our cushions contain high quality fillings carefully calculated to give the correct loft for each range. All fillings will compress when used, just like a pillow. The appearance and performance of your cushions can be restored and preserved by regular maintenance.- Fillings which are not maintained correctly from the beginning will bind and become difficult to restore, losing comfort and shape.

- Swap reversible cushions around and turn where possible to ensure equal wear.
- Leather and selected upholstery ranges have cushion covers which are not fully reversible. Non-reversible cushions should have the filling removed from the cover and turned over regularly.
- New cushions may appear domed, causing slight lifting of the back cushions, with use this will ease as the fibres settle.
- The feel of the seat cushions will vary dependent on the leather and product size chosen; leathers are individual which can give a more relaxed or firmer feel to the seat cushions when in use, larger versions of a range have more cushion surface area so may compact more easily than smaller options in the same range.

Follow these simple steps as soon as your furniture is in use:-

Fibre - A soft and comfortable filling

- After each days use plump cushions, firmly on the edges to restore air between the fibres which maintains their look and prevents fibres binding.
- At least weekly complete the following maintenance; the more often this is carried out the better the filling will perform.
 1. Place the cushion on one of its outside edges and beat the opposite side edge of the cushion inwards with the flat of your hands. The more vigorously you do this, the better.
 2. Turn the cushion round a quarter turn and repeat to beat on all four sides.
 3. Finally, give the cushion a shake and replace.
 4. Remove the cushion interiors from their covers regularly to plump them.

Foam with Fibre Wrap - A firmer and more supportive filling than fibre (available on selected ranges only)

- Initially the foam may vary in firmness, after use over a period of time this will settle to an even feel.
- Plump cushions firmly on the edges occasionally as detailed above to restore air between the fibres and maintain the shape.

Feather or a mixture of Feather & Fibre (available on selected ranges only)

- A luxury filling which will flatten with use, it is easily restored with the same maintenance as fibre.

SOFA BEDS

Ideal as an occasional bed for extra guests a bed mechanism is contained under the seat cushion; this will create a firmer seat than standard sofas, and raise the height of the seat slightly.

- Mechanisms have many moving parts and it is normal for minor squeaks and creaks to emit during use.
- Operate the bed mechanism with care to prevent damage to the mechanism or upholstery.
- Remove the seat cushions and platform cover, lift the front steel rail using the handle.
- Do not lift from the back. The folded frame will move upwards and forward. Continue to unfold the mechanism until it is fully extended. Remove bedding before closing bed. On sofasbeds avoid sitting on mattress edges as this may cause distortion.

LEGS, FEET & LEVELLING

- Furniture must be positioned on a level solid surface to ensure the product does not rock and damage the frame, as even the most modern of properties can experience minor variations in surface levels. Using felt pads or castor cups is recommended to help level, and these will also protect wooden and delicate flooring from possible marking by feet or castors.
- Removable legs which screw in may loosen with use, check monthly that they are secure by gently turning, be careful not to over tighten, those with castors should be tightened with a screwdriver on the end brass screw and firm hand grip on the wooden leg.
- Avoid dragging or dropping your upholstery onto corners or feet, or leaning back on two legs as this may cause damage, lift with two people and place down gently in place.

FIRE RETARDANCY

Due to the fire retardant treatment applied to the foam and the product being sealed within a bag, there can sometimes be a slight odour on arrival. This will pass after a period of time once unwrapped and in use.

VALANCES

Valances are taped up during transit to protect them; any creasing caused will drop out after a period of time.

GUARANTEE

- Our robust and durable frames and springs are manufactured to comply with British Standards, and are guaranteed for a reassuring five years of normal domestic use.
- The guarantee does not apply to the covering leather or cushion fillings as we have no control over their use, or the environment in which they are kept.
- Seconds and ex-display pieces are not covered by the five year guarantee.

SUNLIGHT AND ENVIRONMENT

If your upholstery is exposed to direct sunlight for long periods of time, the colour and leather will deteriorate. Use in hot and sunny conservatories is not recommended.

- At least a 30cm clearance from heat sources is advised to prevent colour change or permanent marks.
- Do not place hot items such as cups, or laptops on leather as this may mark.
- Avoid locating products in excessively high or low temperatures, or where the environment is often damp as this may cause product issues.

GENERAL MAINTENANCE INSTRUCTIONS

Laura Ashley recommends the purchase of a Guardsman Protection Plan* at time of ordering to offer extra peace of mind in case of accidents. To help prolong the life of your leather upholstery we advise the following:

Cleaning

- Apply specialist leather care products only as directed on the container and try first on a hidden area of leather. Do not use leather soaps, hide food, or any polish other than that recommended by a reputable retailer. Suitable leather care kits can be obtained from Laura Ashley.
- For atmospheric dust and dirt that could cause premature wear, clean regularly with a soft Cloth, avoiding vacuum cleaners on leather.
- Keep show wood clean with a damp cloth rinsed in warm water; never use detergents and polish periodically with natural wax.
- Remove all spills immediately. Blot liquid spills with a clean, dry, white cloth, work towards the centre of the spill. Do not rub or use abrasive cleaners, solvents or detergents.
- Should the piece become stained or suffer other damage we recommend professional help is sought. If you have a Guardsman Protection Plan* or other insurance contact them for advice, alternatively services are offered by SafeClean* on 0800 585 693 or Guardsman Home Services* on 0845 6020789 as some of many nationwide furniture specialists available.

Care

- Avoid sitting on the arms or edges of furniture; or pushing feet against or placing them on the arms; as this may cause distortion or damage to the arms or frame
- Using a footstool as a seat may cause damage to the legs and frame.
- Prevent sharp objects such as toys, buckles and heels from coming into contact with your furniture and don't allow pets to climb on or claw the upholstery.
- Air pollution such as cigarette smoke and cooking fumes, can cause premature wear
- Avoid chemicals such as hair preparations, fake tans, insect repellents and other cosmetics coming into contact with the leather; as this is likely to damage the surface.
- When unzipping covers, never force a zip and avoid trapping leather when fitting, or lifting by the zips.

Following the guidelines above will ensure product performance is maintained. Laura Ashley is not responsible for defects caused by the misuse of your product.